



---

**GAS**  
FIREPLACES





# Enviro

HEARTH PRODUCTS



## Designed to heat. Built to Last.

For over 35 years, unsurpassed quality and craftsmanship have made us an industry leader in innovative heating systems. Design, functionality, and efficiency merge to create exceptional products that will exceed all expectations. Whether time-honored traditional or bold and modern, our dynamic range of products will compliment any home décor. With a complete line of fireplace inserts, zero-clearance fireplaces, and freestanding stoves, we have the perfect solution for your heating requirements. We won't just meet your expectations; we'll exceed them...

35<sup>th</sup>  
ANNIVERSARY







Q1 Fireplace – Black Enameled Steel Liner, High Definition Log Set



Q1 Fireplace – Ceramic Brick Liner, High Definition Log Set



Q1 Fireplace – Ceramic Brick Liner, High Definition Log Set

### Design Features

- Clean Face Look — No Louvers
- Hand Welded Firebox
- 150 CFM Room Fan (with variable control)
- Limited Lifetime Warranty
- ClearView Safety Screen
- Quick Access Valve Controls
- Remote or Thermostat Control
- Top or Rear Vent

### Available Options

- Burner Options:
  - High Definition Log Set (Included)
- Liner Options:
  - Steel Painted Liner (Included)
  - Ceramic Brick Liner
  - LedgeStone Liner
  - Black Enameled Steel Liner

### Fireplace Specifications

BTU Maximum Input - NG	20,000 BTU						
Turn Down	Up to 33%						
Heating Area	1,100 ft <sup>2</sup>						
P4 Efficiency	74.5%						
Visible Dimensions	20" x 25¼"						
Visible Glass Area	18¾" x 16⅝"						
Fireplace Install Dims.	<table><tr><td>HEIGHT</td><td>WIDTH</td><td>DEPTH</td></tr><tr><td>35¼"*</td><td>25¼"</td><td>17⅛"</td></tr></table>	HEIGHT	WIDTH	DEPTH	35¼"*	25¼"	17⅛"
HEIGHT	WIDTH	DEPTH					
35¼"*	25¼"	17⅛"					

\*Rear Vent Installation



High Definition Log Set



Brick Liner



Enameled Liner with High Definition Log Set





Q2 Fireplace – Slim Face Surround, Black Enameled Steel Liner, and Driftwood Log Set



Q2 Fireplace – Slim Face Surround, Black Enameled Steel Liner and Glass Burner with Diamond Glass



Q2 Fireplace – Slim Face Surround, Herringbone Liner, and Traditional Log Set

## Design Features

- Clean Face Look — No Louvers
- Hand Welded Firebox
- 150 CFM Room Fan (with variable control)
- ClearView Safety Screen
- Limited Lifetime Warranty
- Remote or Thermostat Control

## Available Options

- **Burner Options:**
  - Traditional Log Set
  - Driftwood Log Set
  - Glass Burner with Diamond Glass
- **Liner Options:**
  - Painted Black Firebox - *Included*
  - Ceramic Brick Liner
  - Herringbone Liner
  - Black Enameled Steel Liner
- **Surround Options:**
  - Slim Face - *Included*
  - Forgeworks Face

## Fireplace Specifications

BTU Maximum Input - NG	24,000 BTU		
Turn Down	33%		
Heating Area	1,400 ft <sup>2</sup>		
P4 Efficiency	69.3%		
Visible Dimensions	33¼" x 29½"		
Visible Glass Area	21¼" x 26"		
Fireplace Install Dims.	HEIGHT 40"	WIDTH 34¾"	DEPTH 15⅞"



Traditional Log Set



Glass Burner with Diamond Glass



Driftwood Log Set





Q3 Fireplace – Forgeworks Surround, Ceramic Brick Liner, and Traditional Log Set



Q3 Fireplace – Black Enameled Steel Liner, and Traditional Log Set



Q3 Fireplace – Brick Liner and Traditional Log Set

### Design Features

- Clean Face Look — No Louvers
- Hand Welded Firebox
- High Efficiency Heat Exchanger
- 150 CFM Room Fan (with variable control)
- Fixed Top Vent / Adjustable Rear Vent
- ClearView Safety Screen
- Limited Lifetime Warranty
- Remote or Thermostat Control

### Available Options

- Burner Options:
  - Traditional Log Set (Included)
- Liner Options:
  - Ceramic Brick Liner
  - Ledgerstone Liner
  - Black Enameled Steel Liner
- Surround Options:
  - Slim Face - *Included*
  - Forgeworks Face

### Fireplace Specifications

BTU Maximum Input - NG	38,000 BTU		
Turn Down	Up to 33%		
Heating Area	2,000 ft²		
P4 Efficiency	67.4%		
Visible Dimensions	33" x 33"		
Visible Glass Area	24¼" x 26"		
Fireplace Install Dims.	HEIGHT 43½"	WIDTH 34¾"	DEPTH 18"



Traditional Log Set



Cast Iron Grate



High Efficiency Heat Exchanger





G39 Gas Fireplace – Painted Black Surround, Rustic Brown Ceramic Brick Liner, and Traditional Log Set





G39 Gas Fireplace – Painted Black Surround, Black Enamel Steel Liner, and Birch Log Set



G39 Gas Fireplace – Painted Black Surround, Black Enameled Steel Liner, and Glass Burner



G39 Gas Fireplace – Painted Black Surround, Ledgestone Liner, and Traditional Log Set

### Design Features

- Adjustable Ember Bed Lighting
- Clean Face Look — No Louvers
- E-Coated Glass (Optional Ceramic Glass)
- Cool Surface System HDK Included
- 130 CFM Room Fan (with variable control)
- ClearView Safety Screen
- Limited Lifetime Warranty



Learn more at  
[enviro.com/bluiq](http://enviro.com/bluiq)

### Available Options

- Burner Options:
  - Traditional Log Set
  - Birch Log Set
  - Driftwood Log Set
  - Glass Burner with Diamond Glass
- Liner Options:
  - Ceramic Brick Liner (Brown or Black)
  - Herringbone Liner
  - Ledgestone Liner
  - Black Enameled Steel Liner
  - Painted Steel Liner (Included)
- Surround Options:
  - Slim Face in Painted Black (incl.)
  - Forgeworks Face

### Fireplace Specifications

BTU Maximum Input - NG	30,000 BTU
Turn Down	Up to 33%
Heating Area	1,600 ft <sup>2</sup>
P4 Efficiency	69.8%
Visible Dimensions	38¼"h x 34"w
Visible Glass Area	24"h x 30"w
Fireplace Install Dims.	HEIGHT 42" WIDTH 41½" DEPTH 18½"



Traditional Log Set



Birch Log Set



Driftwood Log Set





G42 Gas Fireplace – Forgeworks Surround, Rustic Brown Ceramic Brick Liner, and Birch Log Set





G42 Gas Fireplace – Painted Black Surround, Black Enameled Steel Liner, Traditional Log Set



G42 Gas Fireplace – Painted Black Surround, Black Enameled Steel Liner, and Driftwood Log Set



G42 Gas Fireplace – Painted Black Surround, Herringbone Liner, and Traditional Log Set

### Design Features

- Adjustable Ember Bed Lighting
- Clean Face Look — No Louvers
- Ceramic Glass
- Cool Surface System HDK Included
- ClearView Safety Screen
- 130 CFM Room Fan (with variable control)
- Limited Lifetime Warranty



Learn more at  
[enviro.com/bluiq](https://enviro.com/bluiq)

### Available Options

- **Burner Options:**
  - Traditional Log Set
  - Birch Log Set
  - Driftwood Log Set
  - Glass Burner with Diamond Set
- **Liner Options:**
  - Ceramic Brick Liner (Brown or Black)
  - Herringbone Liner
  - LedgeStone Liner
  - Black Enameled Steel Liner
  - Painted Steel Liner (Included)
- **Surround Options:**
  - Slim Face in Painted Black (incl.)
  - Forgeworks Face

### Fireplace Specifications

BTU Maximum Input - NG	40,000 BTU
Turn Down	Up to 33%
Heating Area	2,000 ft <sup>2</sup>
P4 Efficiency	69.6%
Visible Dimensions	43"h x 38"w
Visible Glass Area	26 <sup>7</sup> / <sub>8</sub> "h x 34"w
Fireplace Install Dims.	HEIGHT 50" WIDTH 48 <sup>3</sup> / <sub>4</sub> " DEPTH 23 <sup>1</sup> / <sub>4</sub> "



Forgeworks Face



Diamond Glass Burner



Traditional Log Set









G50 Gas Fireplace – Painted Black Surround, Ceramic Brick Liner, and Traditional Log Set



G50 Gas Fireplace – Painted Black Surround, Black Enameled Steel Liner, and Driftwood Log Set



G50 Gas Fireplace – Painted Black Surround, Painted Black Ceramic Brick Liner, and Birch Log Set

## Design Features

- Adjustable Ember Bed Lighting
- Clean Face Look — No Louvers
- Split Flow Burner
- Two Stage Burner (Split Flow)
- Cool Surface System HDK Included
- ClearView Safety Screen
- Run-Quiet Fan System
- Limited Lifetime Warranty



Learn more at  
[enviro.com/bluiq](http://enviro.com/bluiq)

## Available Options

- **Burner Options:**
  - Traditional Log Set
  - Birch Log Set
  - Driftwood Log Set
  - Glass Burner with Diamond Glass
- **Liner Options:**
  - Ceramic Brick Liner (Brown or Black)
  - Herringbone Liner
  - LedgeStone Liner
  - Black Enameled Steel Liner
  - Painted Steel Liner (Included)
- **Surround Options:**
  - Slim Face in Painted Black (incl.)
  - Forgeworks Face

## Fireplace Specifications

BTU Maximum Input - NG	48,000 BTU		
Turn Down*	67.5%		
Heating Area	2,200 ft <sup>2</sup>		
P4 Efficiency	72.8%		
Visible Dimensions	51"h x 40"w		
Visible Glass Area	28"h x 41¾"w		
Fireplace Install Dims.	HEIGHT 50"	WIDTH 55"	DEPTH 23¼"

\* Turn down takes into account the Split Slow burner



Adjustable Ember Bed Lighting



Glass Burner with Diamond Glass



Traditional Log Set





*RZ41 Gas Fireplace – Painted Black Liner, and Traditional Log Set*





RZ41 Gas Fireplace – LedgeStone Liner, and Traditional Log Set



RZ41 Gas Fireplace – Black Glass Liner, and Birch Log Set



RZ41 Gas Fireplace – Ceramic Brick Liner, and Traditional Log Set

**RZ41**

FIRE-UNDER-LOG  
GASFIREPLACE

## Design Features

- Adjustable Ember Bed Lighting
- Clean Face Look — No Louvers
- Ceramic Glass
- Cool Surface System HDK Included
- ClearView Safety Screen
- 130 CFM Room Fan (with variable control)
- Limited Lifetime Warranty

**RISE** BURNER  
TECHNOLOGY

## Available Options

- **Burner Accents:**
  - Traditional "Fire-Under-Log" Log Set
  - Birch "Fire-Under-Log" Log Set
- **Liner Options:**
  - Ceramic Brick Liner (Brown or Black)
  - Herringbone Liner
  - LedgeStone Liner
  - Black Enameled Steel Liner
  - Painted Steel Liner (*Included*)

## Fireplace Specifications

BTU Maximum Input - NG	40,000 BTU
Turn Down	33%
Heating Area	2,000 ft <sup>2</sup>
P4 Efficiency	66.2%
Visible Dimensions	38¼"h x 34"w
Visible Glass Area	25½"h x 31¾"w
Fireplace Install Dims.	HEIGHT 43½"    WIDTH 41"    DEPTH 20"



RISE Burner with Fire-Under-Log Technology



Adjustable Ember Bed Lighting

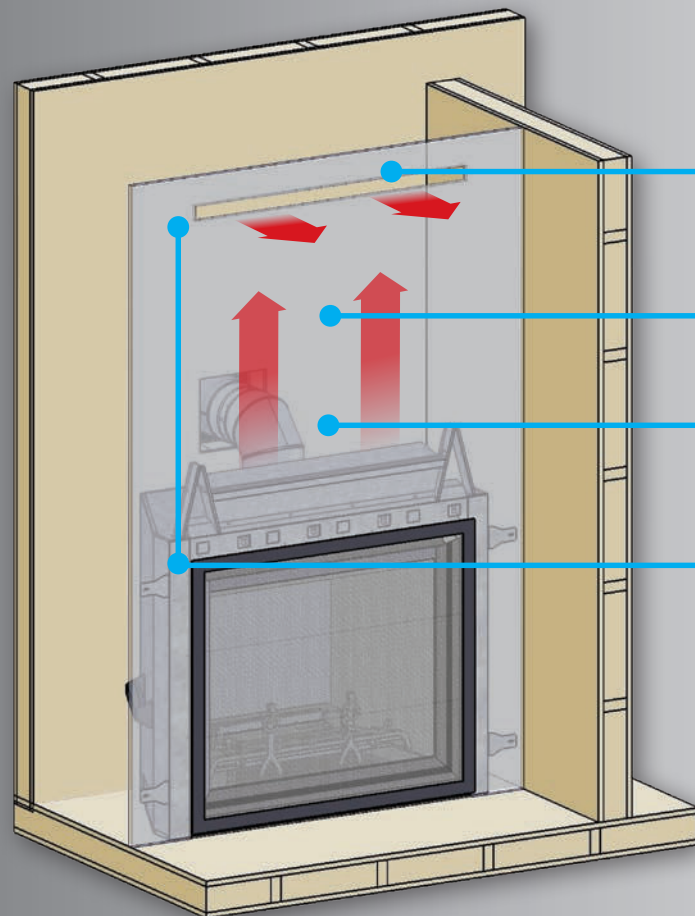


Optional Birch Log Set



# Cool Surface System

INCLUDED WITH THE RZ41 & G SERIES



Convective heat that rises from the fireplace is captured in the chase and channeled through the vent using the Cool Surface System.

The Cool Surface System channels rising heat behind the wall.

Allows up to 1" thick combustible material (ie: drywall) to be used.

The Cool Surface System and vent bezel are included with every G Series unit and the RZ41.

We understand that surface temperatures are an important factor when considering how a fireplace will affect HDTVs or any framed decorations that might be mounted above. The Cool Surface System offers you peace of mind.

We designed this system to help channel excess rising heat up behind the wall and safely push it through an included vent bezel bypassing any valuables above your fireplace.

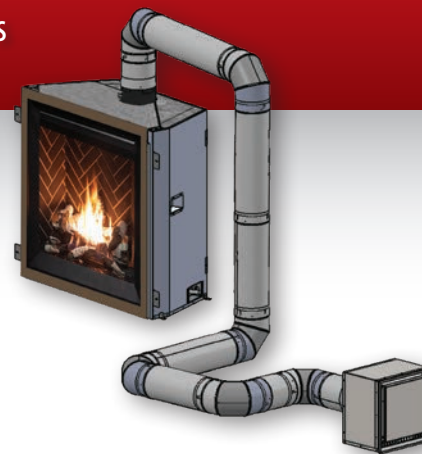
Rising heat is evenly vented forward into the living space through the included bezel

Rising heat is channeled safely past valuable wall mounted items such as a TV

Heat radiates forward from the fireplace window

## Power Vent Kit OPTIONAL FOR THE RZ41 & G SERIES

- A minimum venting run of 10 feet
- A maximum venting run of 110 feet
- Max of 6 elbows in vent configuration
- Venting can run downward 4' below the unit
- Flush mount (paintable) termination
- All stoves EXCEPT the G39 require part #50-2321 (Or you can order part #58DVA-X46 directly from DuraVent) vent reducer (5 x 8" vent reduced to 4 x 6 5/8" vent)
- Utilizes smaller 4 x 6 5/8" venting
- Run Quiet Fan System (noise reduction)





# Fireplace Design Elements

Q1 FIREPLACE



MODERN SURROUND



MINIMAL SURROUND



4-SIDED MINIMAL SURROUND

Q2 FIREPLACE



SLIM FACE  
*Included*



FORGEWORKS FACE  
*Midnight Bronze*

Q3 FIREPLACE



SLIM FACE  
*Included*



FORGEWORKS FACE  
*Midnight Bronze*

G SERIES FIREPLACES



SLIM SURROUND - PAINTED BLACK (G42 pictured)  
Included with the G39, G42, G50, and RZ41



FORGEWORKS SURROUND - MIDNIGHT BRONZE (G42 pictured)  
Available for the G39, G42, and G50

# Fireplace Design Elements

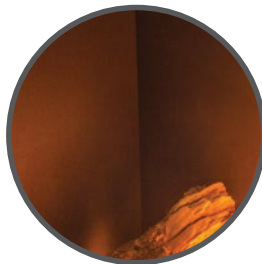
## FIREBOX LINERS



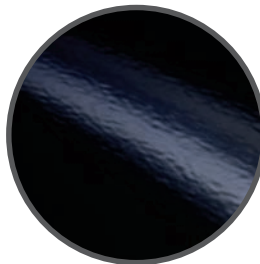
CLASSIC BRICK LINER  
Q1, Q2, Q3



RUSTIC BRICK LINER  
G39, G42, G50, RZ41



PAINTED STEEL LINER  
Q1, Q2, Q3, G39, G42, G50, RZ41



BLACK ENAMELED STEEL LINER  
Q1, Q2, Q3, G39, G42, G50, RZ41



LEDGESTONE LINER  
Q1, Q3, G39, G42, G50, RZ41



HERRINGBONE LINER  
Q2, G39, G42, G50, RZ41

## BURNER STYLES



CLASSIC LOG SET  
Q1



TRADITIONAL LOG SET  
Q2, Q3, G39, G42, G50



BIRCH LOG SET  
G39, G42, G50



DRIFTWOOD LOG SET  
Q2, G39, G42, G50



TRADITIONAL "FIRE-UNDER-LOG"  
RZ41



BIRCH "FIRE-UNDER-LOG"  
RZ41



GLASS MEDIA  
Q2, G39, G42, G50



Fireplace Design Elements

Fireplace Surrounds	Q1		Q2		Q3		RZ41		G39		G42		G50	
	GAS FIREPLACE		GAS FIREPLACE		GAS FIREPLACE		GAS FIREPLACE		GAS FIREPLACE		GAS FIREPLACE		GAS FIREPLACE	
Minimal Surround	HEIGHT	WIDTH	HEIGHT	WIDTH	HEIGHT	WIDTH	HEIGHT	WIDTH	HEIGHT	WIDTH	HEIGHT	WIDTH	HEIGHT	WIDTH
	26 3⁄8"	22 ¾"												
Minimal Surround Four-Sided	27 ½"	24 ¼"												
Modern Surround*	30"	30"												
Slim Face			28¾"	32 ¾"	32"	32 ¾"	33¼"	37¾"	33¼"	37¾"	37"	42½"	39"	50½"
Forgeworks Face			29 ¼"	33 7⁄8"	32 7⁄8"	35 7⁄8"			33¾"	38¾"	37"	42½"	39"	50½"

Firebox Liners	Q1		Q2		Q3		RZ41		G39		G42		G50	
	GAS FIREPLACE		GAS FIREPLACE		GAS FIREPLACE		GAS FIREPLACE		GAS FIREPLACE		GAS FIREPLACE		GAS FIREPLACE	
Classic Brick Liner	Optional		Optional		Optional									
Rustic Brick Liner							Optional		Optional		Optional		Optional	
Painted Steel Liner	Included						Included		Included		Included		Included	
Black Enameled Steel Liner	Optional		Optional (included with Q2G)		Optional		Optional		Optional		Optional		Optional	
Ledgestone Liner	Optional				Optional		Optional		Optional		Optional		Optional	
Herringbone Liner			Optional				Optional		Optional		Optional		Optional	

Burner Variations	Q1		Q2		Q3		RZ41		G39		G42		G50	
	GAS FIREPLACE		GAS FIREPLACE		GAS FIREPLACE		GAS FIREPLACE		GAS FIREPLACE		GAS FIREPLACE		GAS FIREPLACE	
Classic Log Set	Included													
Traditional Log Set			Included		Included				Optional		Optional		Optional	
Birch Log Set									Optional		Optional		Optional	
Driftwood Log Set			Optional						Optional		Optional		Optional	
Traditional Log Set - "Fire-Under-Log"							Optional							
Birch Log Set - "Fire-Under-Log"							Optional							
Glass Media			Top vent only						Optional		Optional		Optional	

Additional Features	Q1		Q2		Q3		RZ41		G39		G42		G50	
	GAS FIREPLACE		GAS FIREPLACE		GAS FIREPLACE		GAS FIREPLACE		GAS FIREPLACE		GAS FIREPLACE		GAS FIREPLACE	
Run Quiet Fan System	Included		Included		Included		Included		Included		Included		Included	
Remote Control	Included		Included		Included		Included		Included		Included		Included	
Cool Surface System (HDK)							Built-in		Built-in		Built-in		Built-in	
Power Vent Kit							Optional		Optional		Optional		Optional	
Ceramic Glass	Included		Included		Included		Included		Optional		Included		Included	
Ember Bed Lighting (Log IPI Only)							Included		Included w/IPI		Included w/IPI		Included w/IPI	

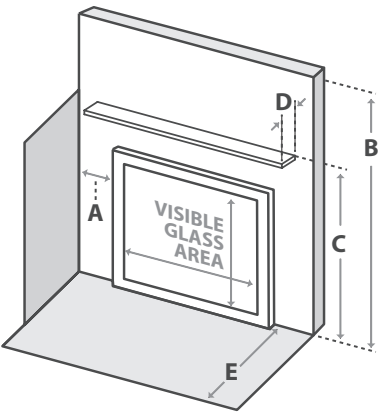
Fireplace Specifications

Performance	Q1		Q2		Q3		RZ41		G39		G42		G50	
	GAS FIREPLACE		GAS FIREPLACE		GAS FIREPLACE		GAS FIREPLACE		GAS FIREPLACE		GAS FIREPLACE		GAS FIREPLACE	
BTU Max input - NG / LP	20,000 / 18,500		24,000 / 20,000		38,000 / 38,000		40,000 / 38,000		30,000 / 30,000		40,000 / 40,000		48,000 / 48,000	
Turn Down*	33%		33%		33%		33%		33%		33%		67.5% w/Split flow	
IPI	Available		Available		Available		Standard		Available		Available		Standard	
Efficiency - Steady State**	76.1%		70.7%		71.6%		69.2%		71.37%		72.1%		75.7%	
Efficiency - FE rating (P4)†	74.5%		69.3%		67.3%		66.2%		69.8%		69.6%		72.8%	
Visible Dimensions	20" x 25¼"		33¼" x 29½"		33" x 33"		38¼" x 34"		38¼" x 34"		43" x 38"		51" x 40"	
Visible Glass Area	18¾" x 16⅝"		21¼" x 26"		24¼" x 26"		25⅝" x 31¾"		24" x 30"		26⅞" x 34"		28" x 41⅜"	
Run-Quiet Fan System	150 CFM		150 CFM		150 CFM		130 CFM		130 CFM		130 CFM		130 CFM	

Installation	Q1			Q2			Q3			RZ41			G39			G42			G50		
	GAS FIREPLACE			GAS FIREPLACE			GAS FIREPLACE			GAS FIREPLACE			GAS FIREPLACE			GAS FIREPLACE			GAS FIREPLACE		
Framing Dims (w/Screen)	H	W	D	H	W	D	H	W	D	H	W	D	H	W	D	H	W	D	H	W	D
	35 ¼"	25 ¼"	17 5⁄17"	40"	34 ⅝"	15 7⁄8"	43 ½"	34 ⅝"	18"	43 ½"	41"	20"	42"	41 ½"	18 ¼"	50"	48¾"	23¼"	50"	55"	23¼"
Venting Collar Size	4" x 6 ⅝"			4" x 6 ⅝"			4" x 6 ⅝"			5" x 8" Rigid			4" x 7" Flex & 4" x 6 ⅝" Rigid			5" x 8" Flex & 5" x 8" Rigid			5" x 8" Flex & 5" x 8" Rigid		
Venting Orientation	Top / Rear			Top / Rear			Top / Rear			Top			Top			Top			Top		
LP Conversion Kit (IPI)	Optional			Optional			Optional			Optional			Optional			Optional			Optional		
Weight (Average weight inc. liner & media)	110 lbs			187 lbs			275 lbs			425 lbs			300 lbs			414 lbs			489 lbs		

Clearance to Combustibles	Q1	Q2	Q3	RZ41	G39	G42	G50
A - Side of unit to side wall	7"	5¼"	9¾"	1"	7"	7"	7"
B - Minimum clearance to chase ceiling ††	35¼" 41"	43½" 54"	43½" 82"	79½"	72"	78"	78"
C - Minimum clearance to mantle height	35¼"	42"	43½"	45¼"	45"	45¼"	48"
D - Maximum mantle depth @ Min. Height	2"	2"	2"	4"	4"	4"	4"
E - Front of door to edge of floor protection	12"	0"	0"	0"	0"	0"	0"

\* Turn down based on P4 efficiencies on low.  
\*\* Steady state rating based on conventional venting configuration.  
† Efficiency based on the P4-15 measured efficiency rating of the IPI models  
†† Q1, Q2, & Q3, Rear vent and top vent





The best way to visualize  
your dream fireplace at home  
is with the Enviro App!



Manufactured by Sherwood Industries Ltd • Victoria, BC, Canada  
enviro.com • info@enviro.com • Printed in Canada, September 2024

